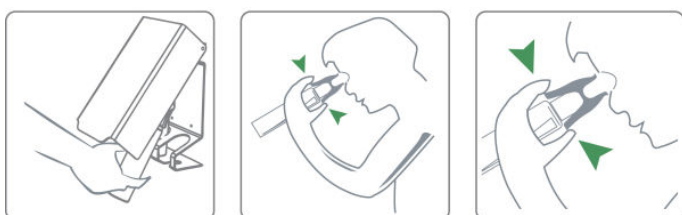




## FAST AND EFFICIENT FIRST AID

eyeaid is single hand operated, and therefore both quick, easy and effective in use. It only takes one move to start rinsing your eye. The innovative and unique eye opener ensures a safe and precise rinsing of the eye. The eye opener makes it possible to open the eye without any physical contact to the eye or its surroundings. This eliminates the risk of further contamination from "dirty" fingers.

By severe injuries the long and effective rinsing time ensures the injured person high mobility during transport to hospital. The eyeaid wall station is highly visible due to its unique design and choice of colours. The station ensures quick access to the spray cans and protects them from dirt and dust. eyeaid gives you great value for money through an innovative solution and long rinsing time at lower cost.



### Content in each 250 ml. can

Ingredient	CAS no.	Weight in %
Sodium Dihydrogenphosfat	13472-35-0	<1
Sodium Chloride, USP	7647-14-5	0,9
Sodium Hydroxid	1310-73-2	Adjusted to pH7,4
Aqua, USP		100
Nitrogen, USP	7727-37-9	

eyeaid is based on a sterile Bag-in-Valve spray can solution, that ensures the eye a balanced and constant running flow of eye rinse solution. Each spray can contains 250 ml. of sterile saline eyewash solution, which allows for a minimum of 15 minutes rinsing of any dangerous chemical or foreign body in the eye.

The aerosol solution ensures the injured person the ability to rinse independently of the injured persons physical position.

### Technical Specification – eyeaid Station:

- Holder – 2 mm steel with powder coating
- Front Lid – 2mm acrylic (axpet) with silk print
- Dimensions – 320 X 175 X 103 mm



### Technical Specification – Spray can:

- 250 ml. 0,9% buffered sodium chloride
- Nitrogen based aerosol can
- Pressure – 4,5 Bar
- Plastic material: Borealis HD810140
- Net weight 315 gr.
- Shelf life 3 years

**EYEAID EYEWASH PRODUCTS ARE OFF COURSE CE LABELLED IN ACCORDANCE WITH THE REGULATIONS FOR MEDICAL EQUIPMENT AND THEY ARE STERILE, SO THE EYE WILL NOT BE FURTHER CONTAMINATED DURING RINSING.**

Article no.	Description
300777	eyeaid eyewash 250 ml. spray can
300779	eyeaid eyewash refill box with 2 X 250 ml. spray cans
300780	eyeaid station incl. 2 X 250 ml. spray cans
300781	eyeaid station

Further information to be found at [www.eyeaid.dk](http://www.eyeaid.dk)